

Datasheet

DS_A26_T_2013 v3.8.20

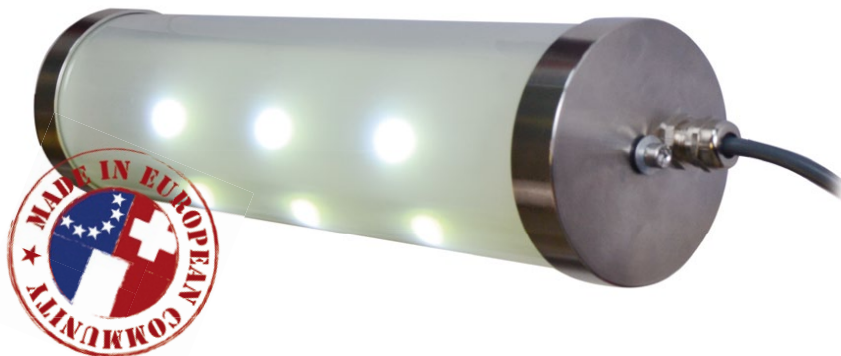
A26 T

TECHNICAL CHARACTERISTICS

Housing	5mm sandblasted borosilicate glass
	Closure inox 316L
	Cable-gland inox 316L
Reflector	270°
Degrees of protection	IP67 IK05
	Tropicalized electronic
Fire resistance	Casing M0
Appliance class	Class I
LED	2x3 LUW W5AM
Lifetime	>100 000 hours
Temperature of use	- 10 à + 50 °C
Mode of operation	Maintained
Luminous flux	>200 lm
Warranty	5 years

Self contained

Input voltage	220-240V AC 50-60Hz
Battery	NiMH 7,2V ; 2,1Ah
Emergency duration	3 hours
Power consumption	11 VA
Auto-test	Yes
Weight	2.900 Kg

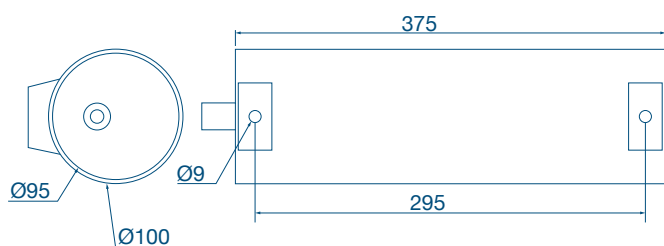


Standards : NF EN 60598-1, NF EN 60598-2-22, NF C 71-800, NFC 71-801, NFC 71-820

Standards : BS EN 60598-1, NF EN 60598-2-22, BS EN 61347-2-7, BS EN 61347-1

Standards : NFP92507, NFP92501, BS6853 B5.5-NFF 16101, NFX 10702, NFF16101, NFX10702

DIMENSIONS (mm)



REFERENCES

Designation	Type	Auto-test	Emergency duration	Centraltest	Mounting
A26T L6RW3-TA-WM	self-contained	yes	3h	Optional	Wall

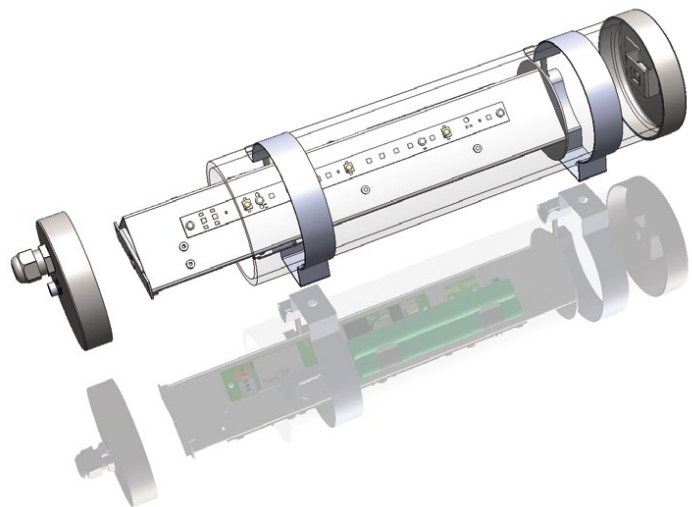


INSTALLATION AND STARTUP

For the mounting and the installation of the luminaire, please refer to document FI_A26_T



Flash this code to download the document

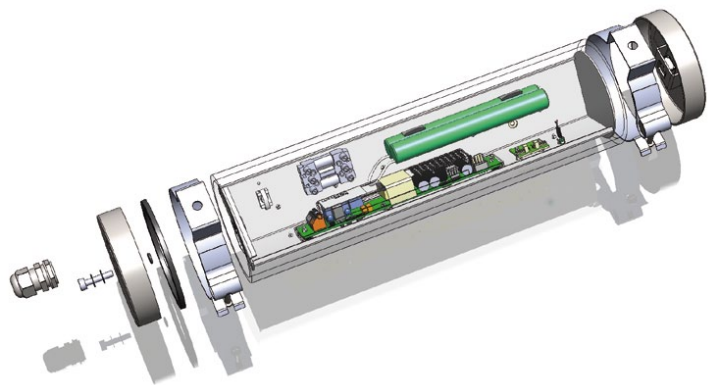


AFTER SALE SERVICE AND SPARE PARTS

For the detail of spare parts, please refer to document FN_A26_T



Flash this code to download the document



MAINTENANCE

For the procedure of change of parts, please refer to the document FM_A26_T



Flash this code to download the document